



ANTONINI
NAVI

ANTONININI
N.A.V.

FULVIO DE SIMONI
YACHT DESIGN

UP-40 CROSSOVER

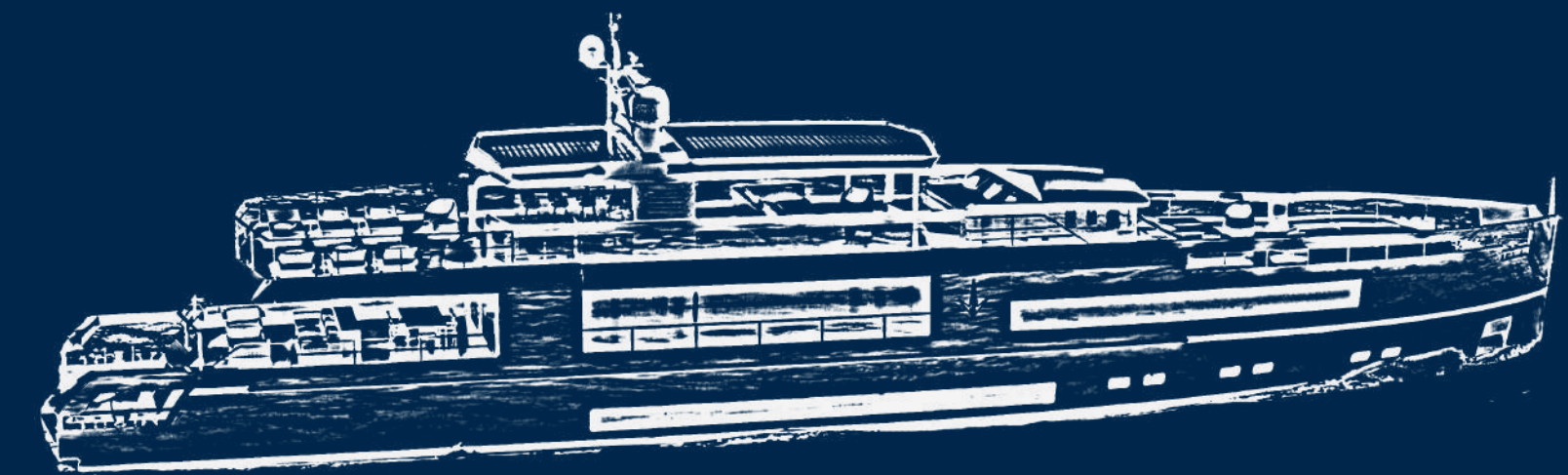
UP-40 CROSSOVER CONCEPT



UP-40 Crossover is a modern reinterpretation of classic boats designed with simplicity and elegance for a precise function.

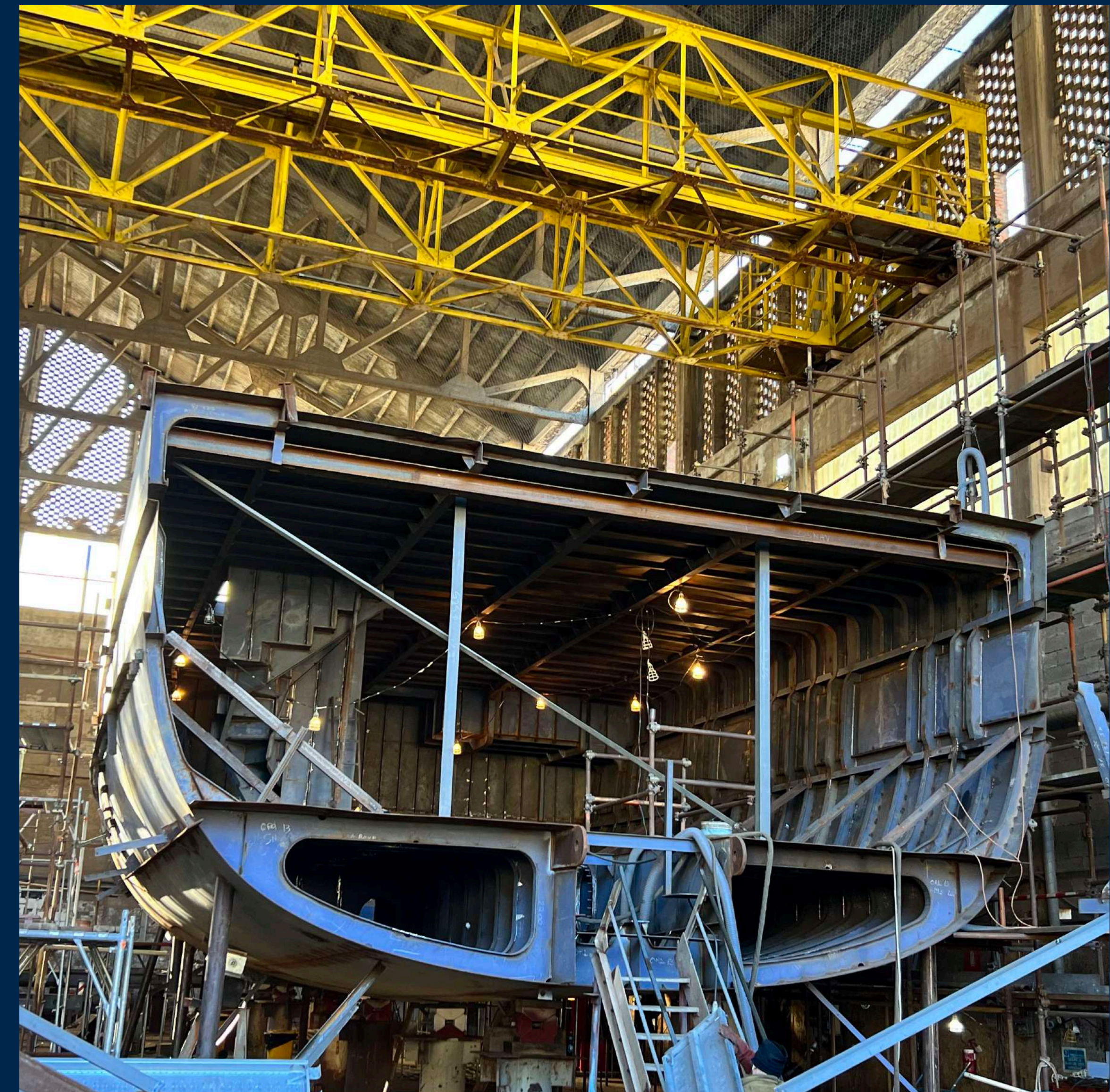
The unusual arrangement of the decks, with the wheelhouse area and foredeck set at a height midway between the main and upper decks, minimizes the difference in height and creates continuity across the entire upper section of the boat, turning it into a huge terrace on the water.

This solution offers over 200 square meters of uninterrupted deck space.



UP-40 CONCEPT UTILITY PLATFORMS

“Utility Platform” is the first pre-compartmented modular platform for the construction of steel superyachts.



SLOT AVAILABLE: 2026

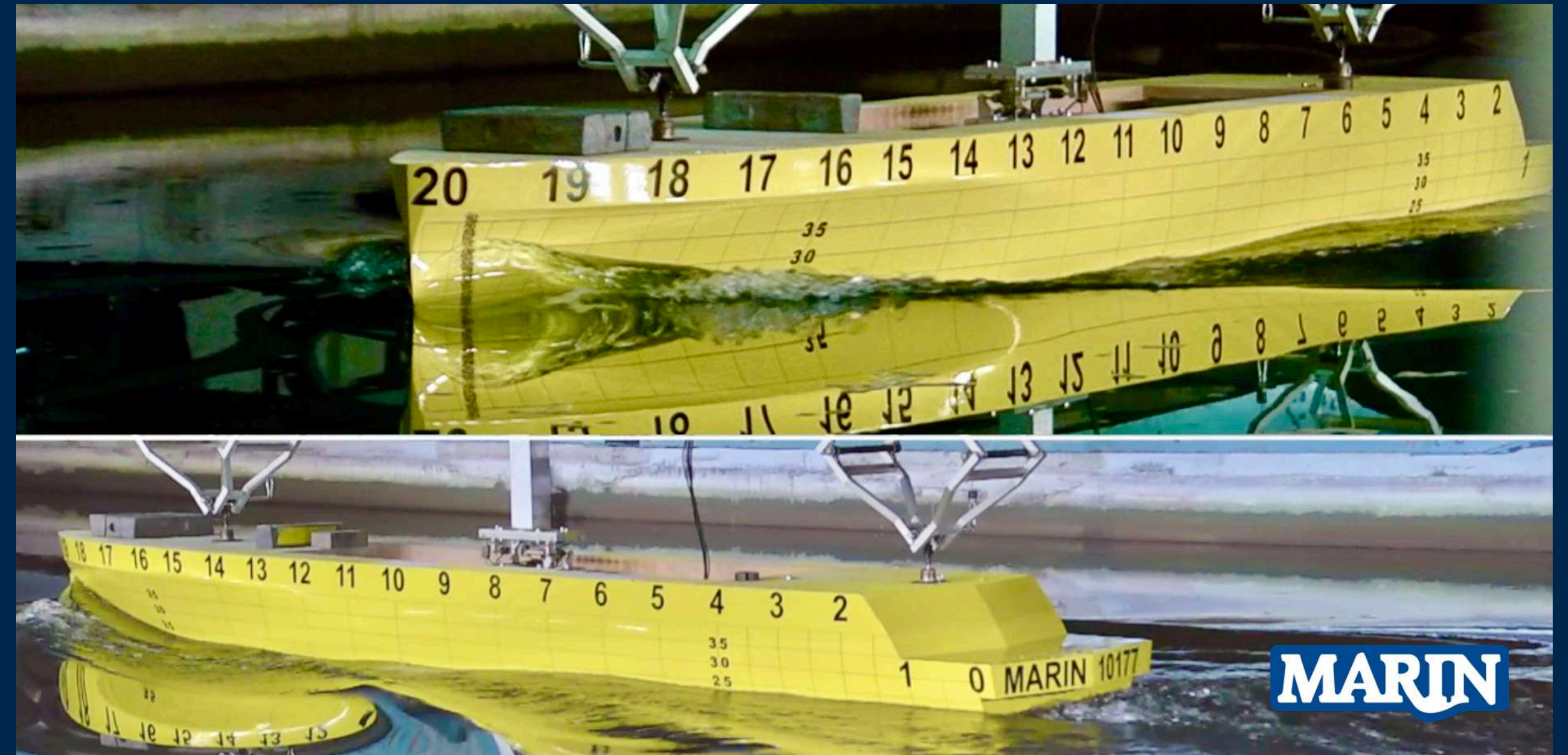


YACHT DESIGNER
FULVIO DE SIMONI

Fulvio de Simoni initiated his career in the 1970s. Known for his multifaceted, innovative, and non-conformist design approach, he collaborated with shipyards globally and contributed to the construction of over three thousand boats, earning numerous awards.



FULVIO DE SIMONI
YACHT DESIGN



The hull, hull lines, and appendages underwent static and dynamic testing at the MARIN Maritime Research Institute in the Netherlands.



UP-40 CROSSOVER
STRENGTHS

BEACH PLATFORM

OPEN CINEMA AREA

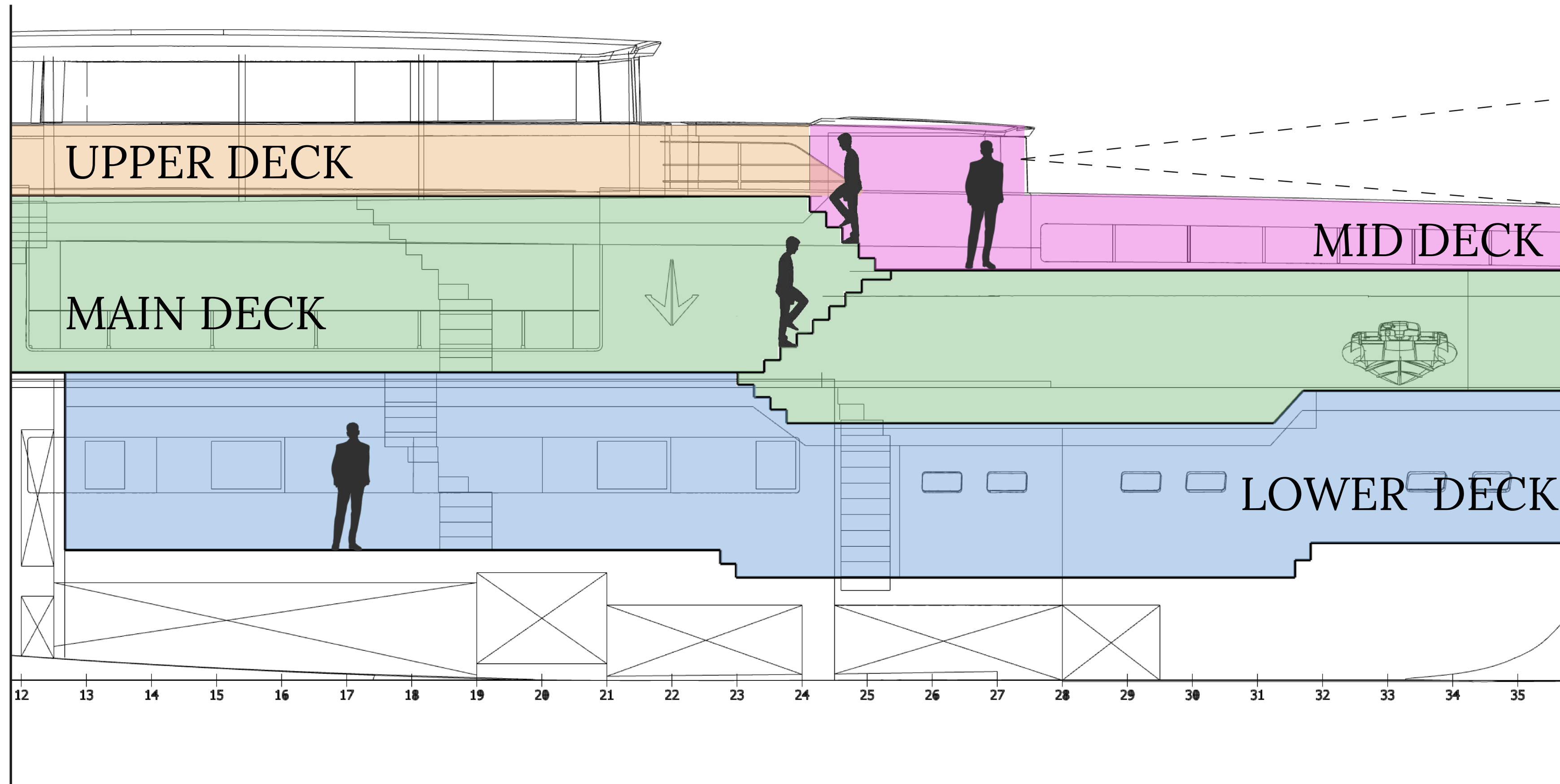
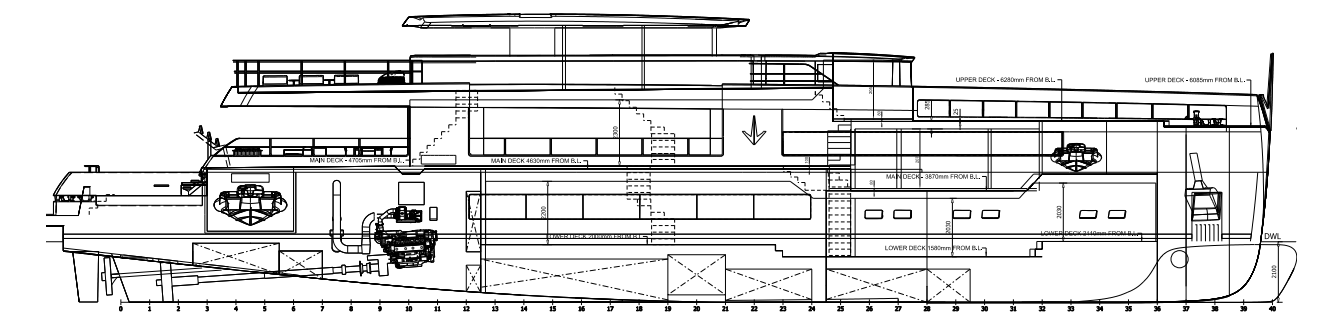
POOL AREA
4m²



WHEELHOUSE
19m²

UP-40 CROSSOVER

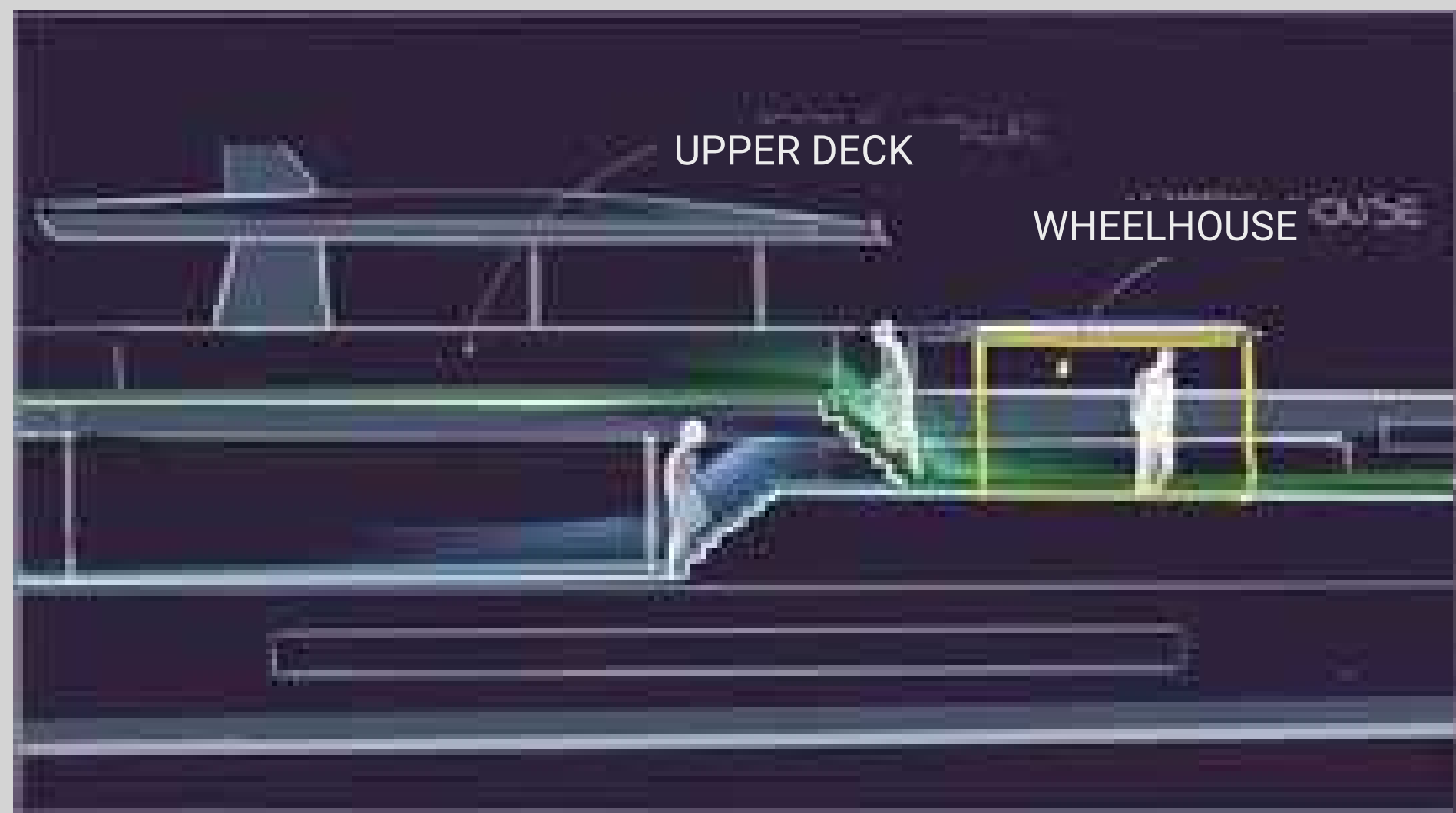
DECKS VOLUMES



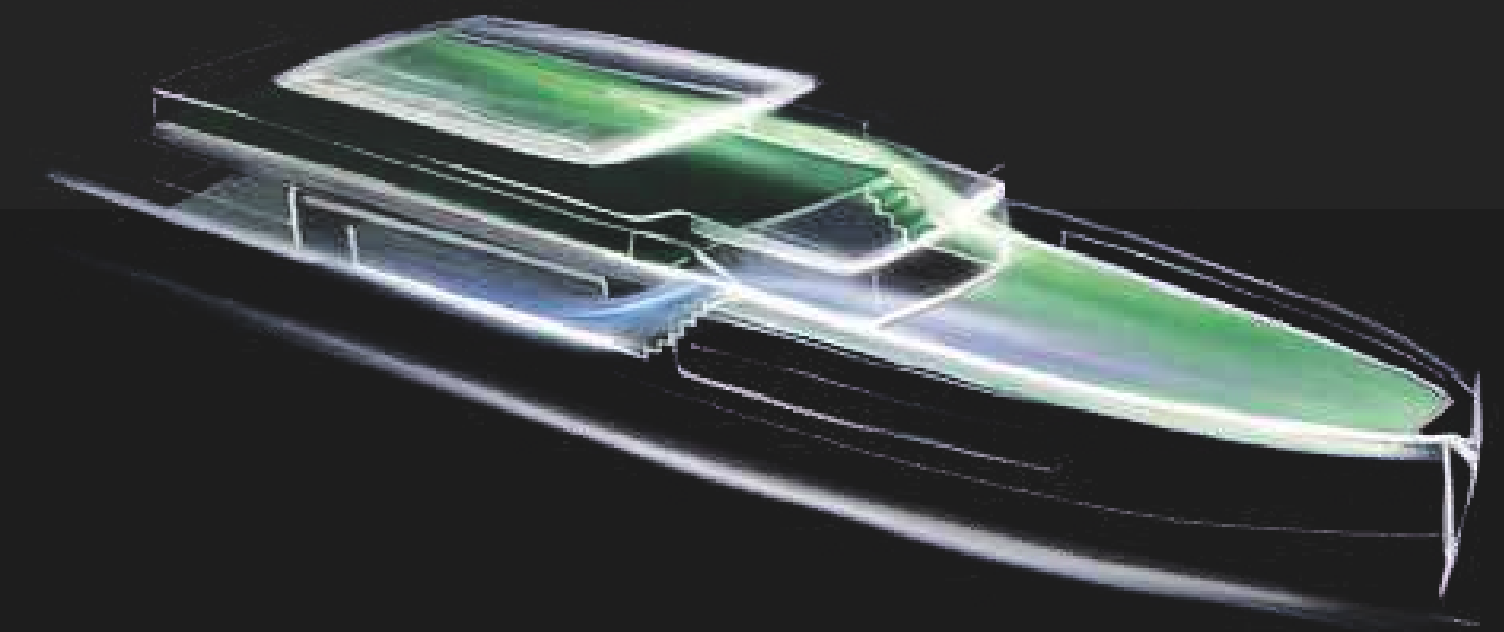
UP-40 CROSSOVER

DECKS CONNECTION

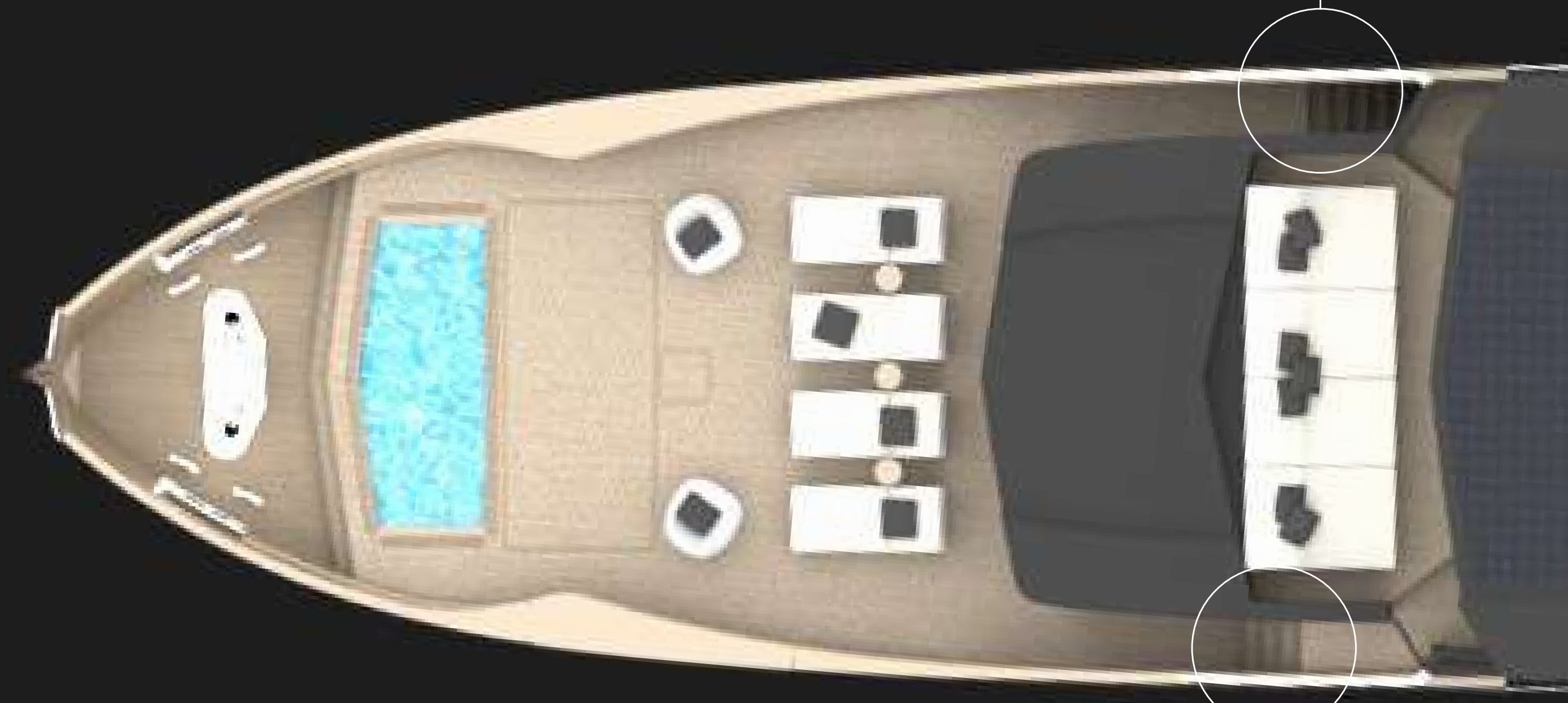
From the Main Deck it is possible to reach the Forward Deck along the starboard side of the boat. Conversely, the Forward Deck is directly connected with the Upper Deck or private access to the Owner's area.



2 LINEAR DECKS CONNECTED BY A MID-DECK WHEELHOUSE



STAIRS TO
LOWER DECK



STAIRS TO
UPPER DECK

POOL AREA

The pool in the bow area, creating a fullfledged solarium is pleasantly airy at anchor and during cruising



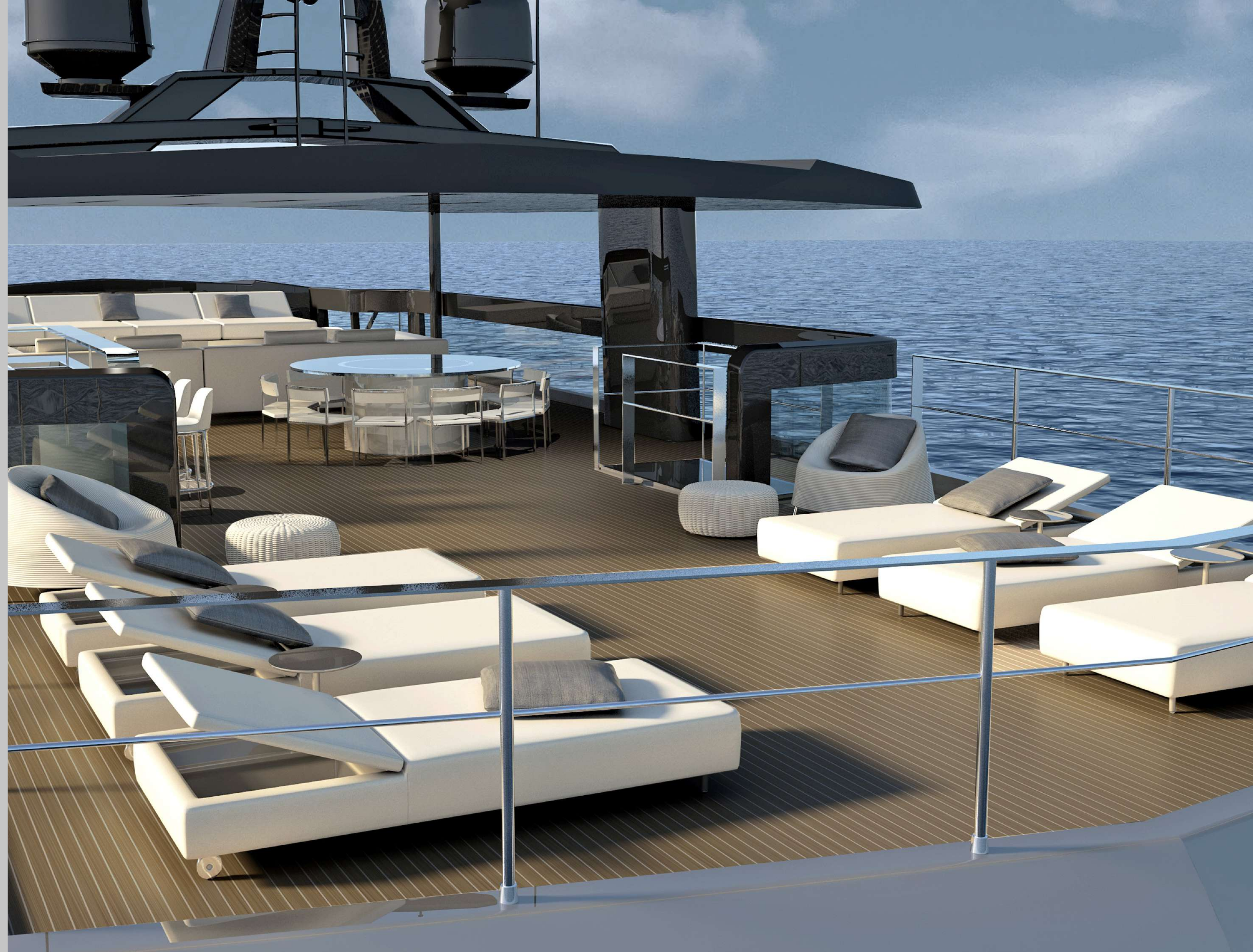
BEACH CLUB

Gymnasium and Jet Ski



UPPER DECK

150m2 of upper-deck with the maximum of luxury comfort

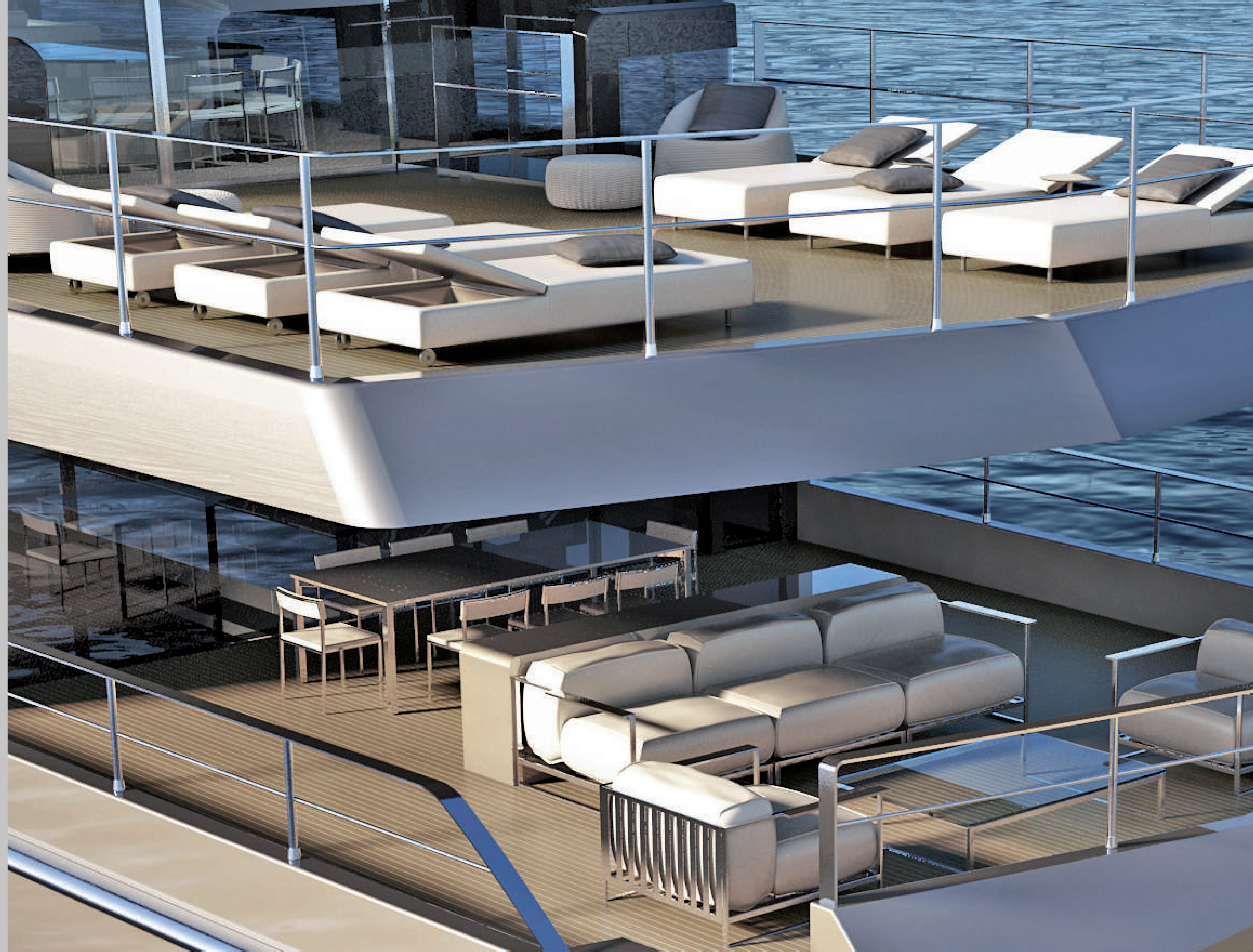


OPEN CINEMA
AREA



COMMON AREAS

3 different areas dedicated to
lunch/dinner



OWNER'S SUITE



UP-40 CROSSOVER

TECHNICAL SPECIFICATION

MATERIALS

Hull: Steel

Superstructure: Aluminium

DIMENSIONS

Length over all (LOA): 43.0 m

Maximum beam: 8.5 m

Depth, amidship:..... 4.4 m

Draught, full load under the keel: 2.2 m

GROSS TONNAGE: <500 GT

CAPACITIES

Fuel: 48.000 Its

FreshWater: 9.000 Its

Black Water: 5.800 Its

Bilge: 2.200 Its

Pool: 3.500 Its

PERFORMANCE

Cruising speed: 16 kts

Max Speed: 16.0 kts

Range @10 kts:..... 4.000 nm

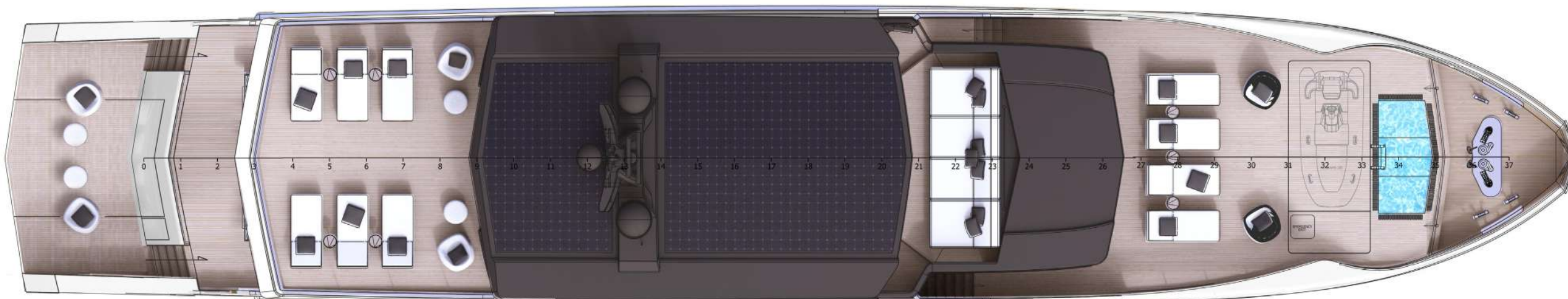
ENGINES std PROPULSION:..... 2xMAN 1029 kW

ACCOMMODATION

Passengers: 12p - 6 Cabins

Crew: 7+1p - 5 Cabins

UP-40 CROSSOVER
**GENERAL
ARRANGEMENT**



TOP VIEW



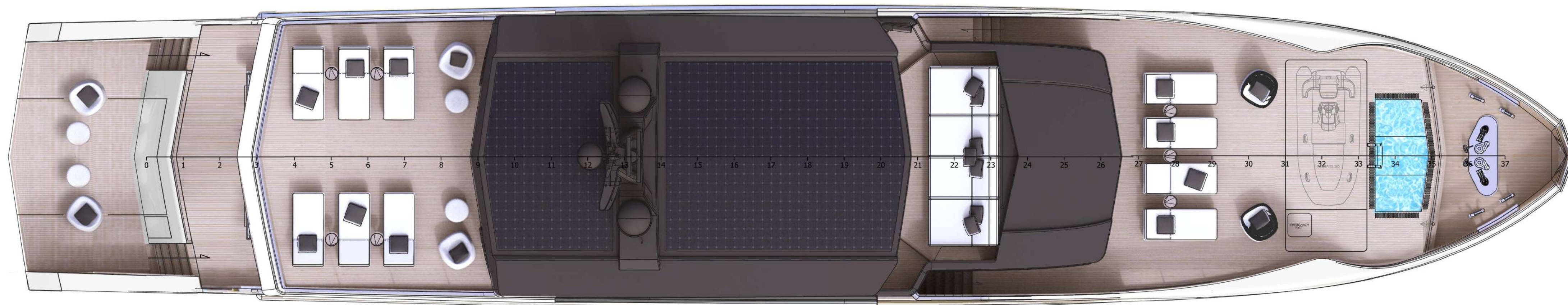
UPPER DECK



MAIN DECK



UP-40 CROSSOVER
SUN DECK | BRIDGE DECK



UP-40 CROSSOVER
UPPER DECK



UP-40 CROSSOVER MAIN DECK



UP-40 CROSSOVER LOWER DECK





UP-40 CROSSOVER



UP-40 CROSSOVER



UP-40 CROSSOVER



YACHTS

UP-40 PLATFORM



ANTONINI
N A V I

ANTONINI NAVI S.R.L.

Sede legale e stabilimento:

Località Pertusola - Frazione Muggiano - 19032 Lerici (LA SPEZIA) - ITALY

Ph +39 0187 1771300

info@antonininavi.com

www.antonininavi.com - www.gruppoantonini.it